

# Northwest Marine Mammal Stranding Network

## Central Puget Sound Marine Mammal Stranding Network

February 2012



### NOAA FISHERIES SERVICE

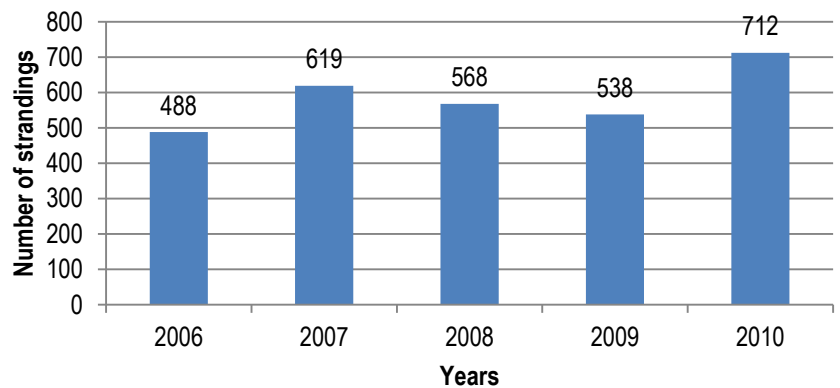
#### Inside This Issue

- What is the NWMMSN? ..... 1
- Local Stranding Network Info ..... 3
- Stranding Data ..... 1-5
- Other Resources ..... 2
- Questions ? ..... 2

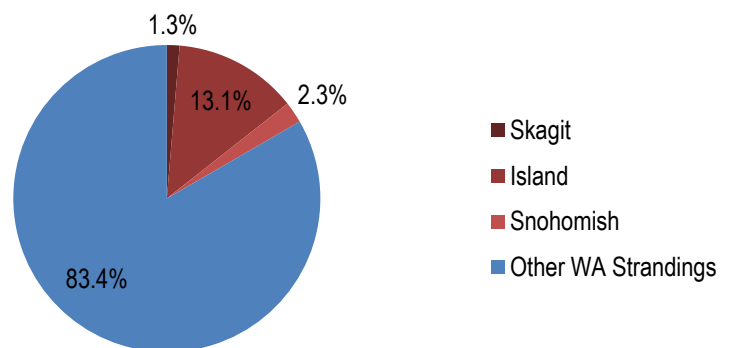
### What is the Northwest Marine Mammal Stranding Network?

The National Oceanic and Atmospheric Administration (NOAA) Northwest Marine Mammal Stranding Network was established in the early 1980's under the Marine Mammal Protection Act (MMPA). Members of the network respond to marine mammal stranding events along the Washington and Oregon coasts and are part of a nationwide network. The network responds to whales, dolphins, porpoises, seals, and sea lions.

### Washington's Marine Mammal Strandings Data, 2006-2010



### Central Puget Sound MMSN County Strandings, 2006-2010

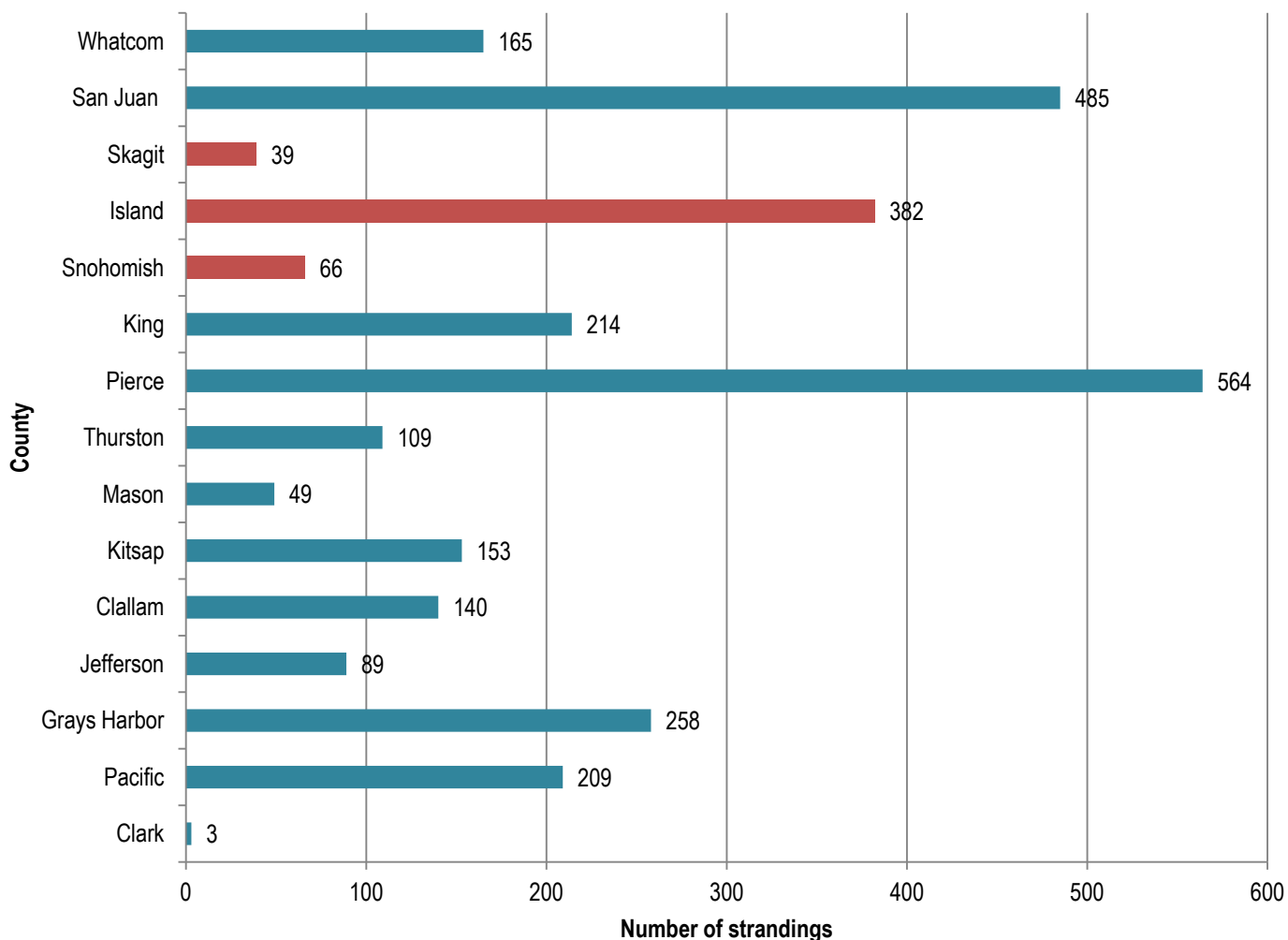


NOAA





## Washington's Marine Mammal Strandings Data by County, 2006-2010



### NOAA Northwest Regional Website & Other Resources

For more information on the Northwest Marine Mammal Stranding Network and to find contact information for other local stranding network groups please visit: <http://www.nwr.noaa.gov/Marine-Mammals/Stranding-Information.cfm>

To visit your local stranding network's website please visit:  
(This is where the local group would put in their website link if they have one).

For more information on the Marine Mammal Health and Stranding Response Program please visit:  
<http://www.nmfs.noaa.gov/pr/health/>

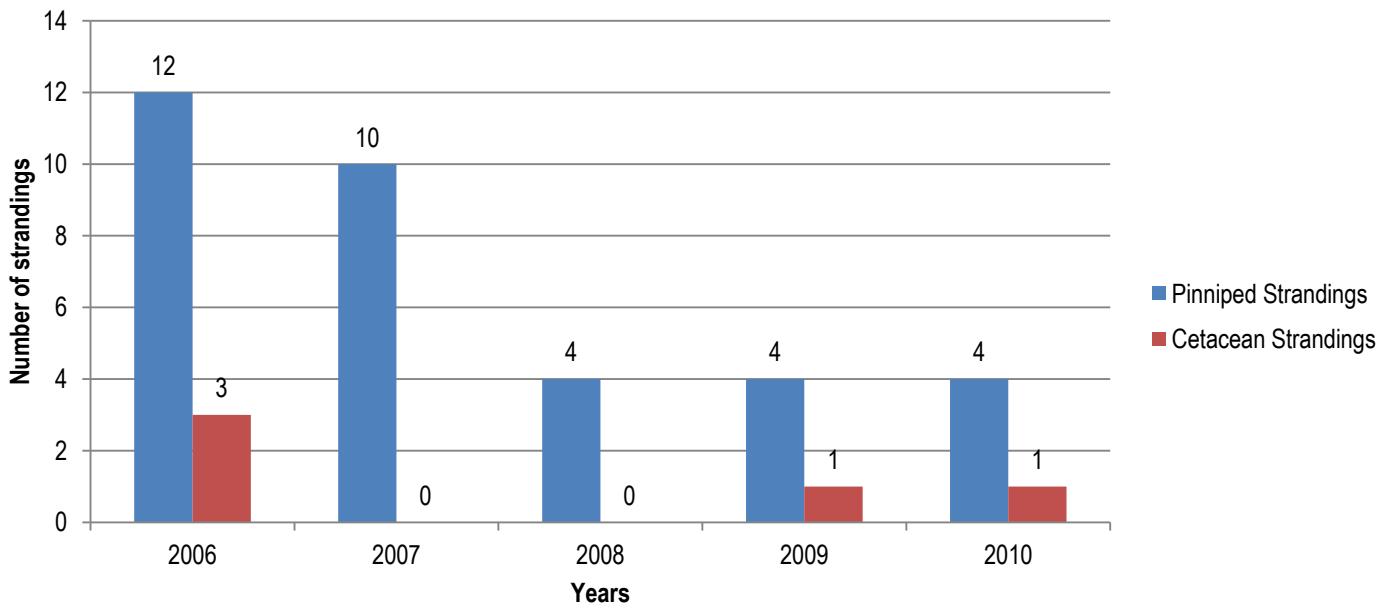
If you have questions about the data or would like more information please feel free to contact the NOAA Stranding Program office at:  
206-526-4747 or email [Kristin.Wilkinson@noaa.gov](mailto:Kristin.Wilkinson@noaa.gov)



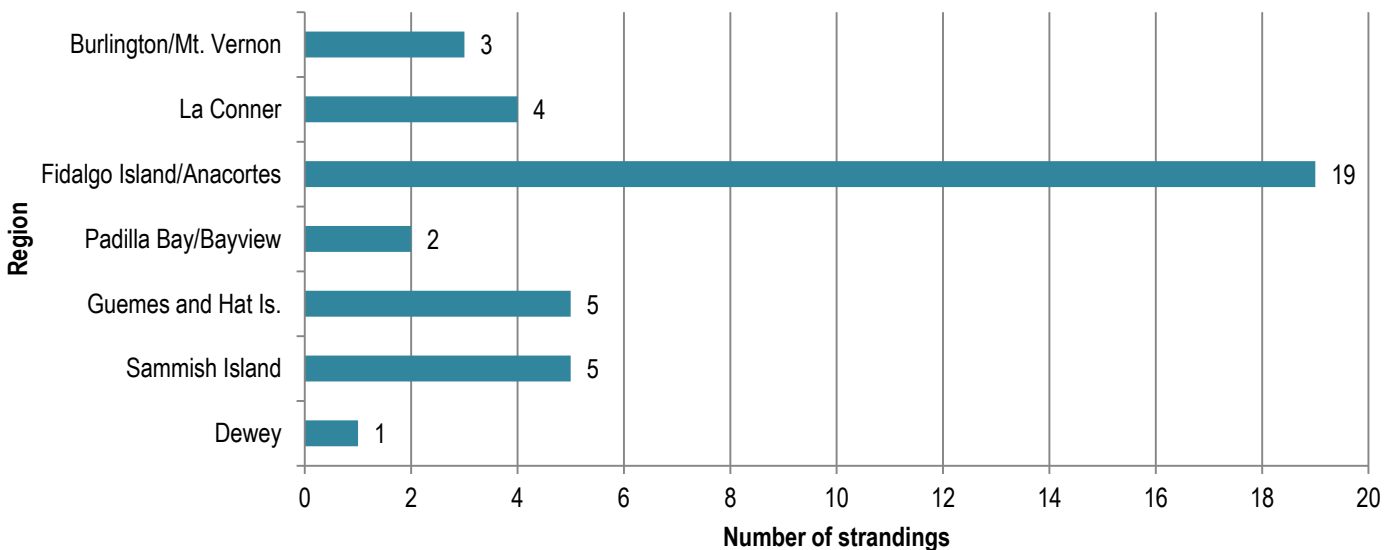
## Your local stranding network is: Central Puget Sound Marine Mammal Stranding Network

This is where the local stranding network would put information about their group, contact information, and any other information they would like to share with local officials.

### Skagit County Stranding Data, 2006-2010

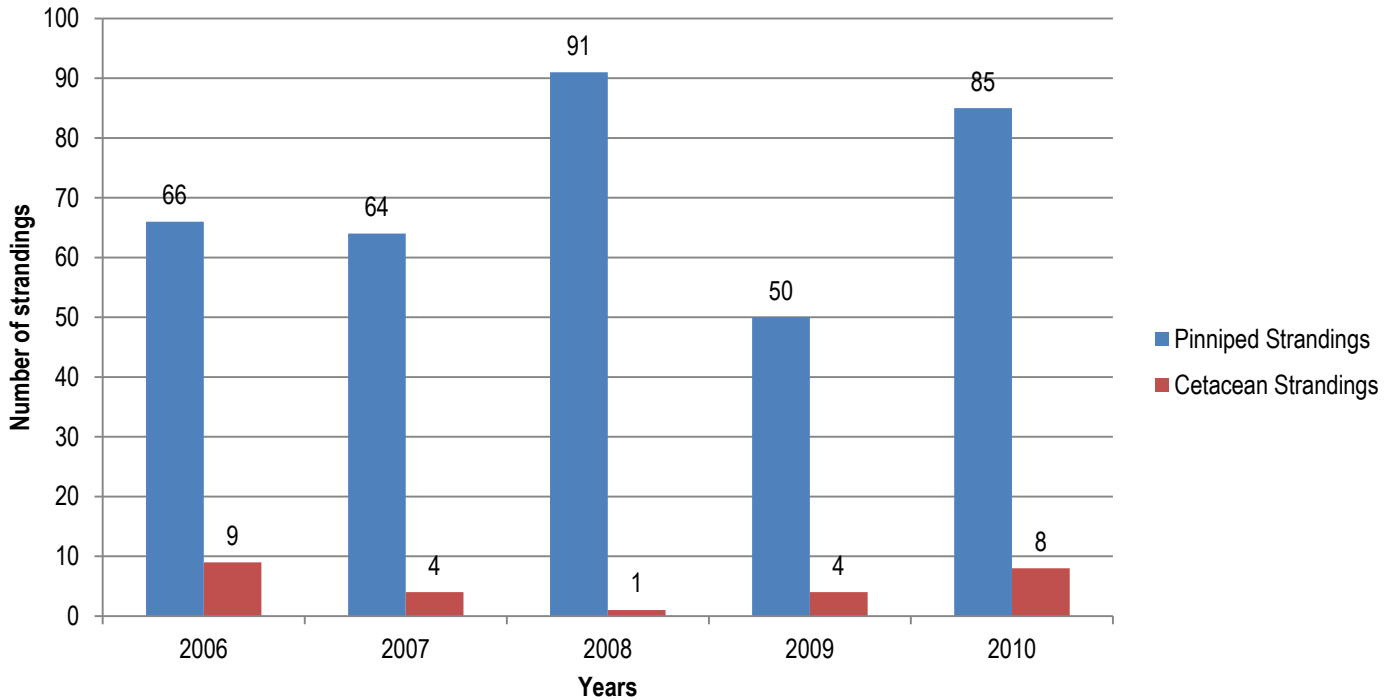


### Skagit County Marine Mammal Strandings by Region, 2006-2010

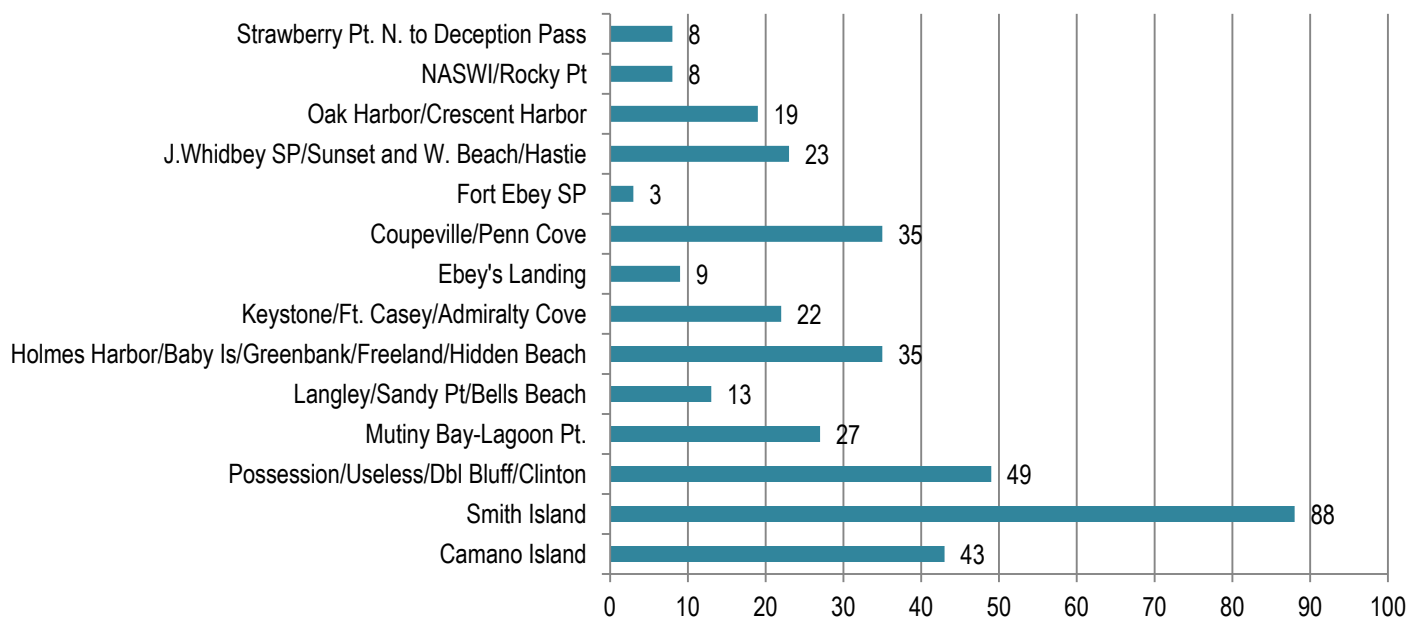




## Island County Stranding Data, 2006-2010

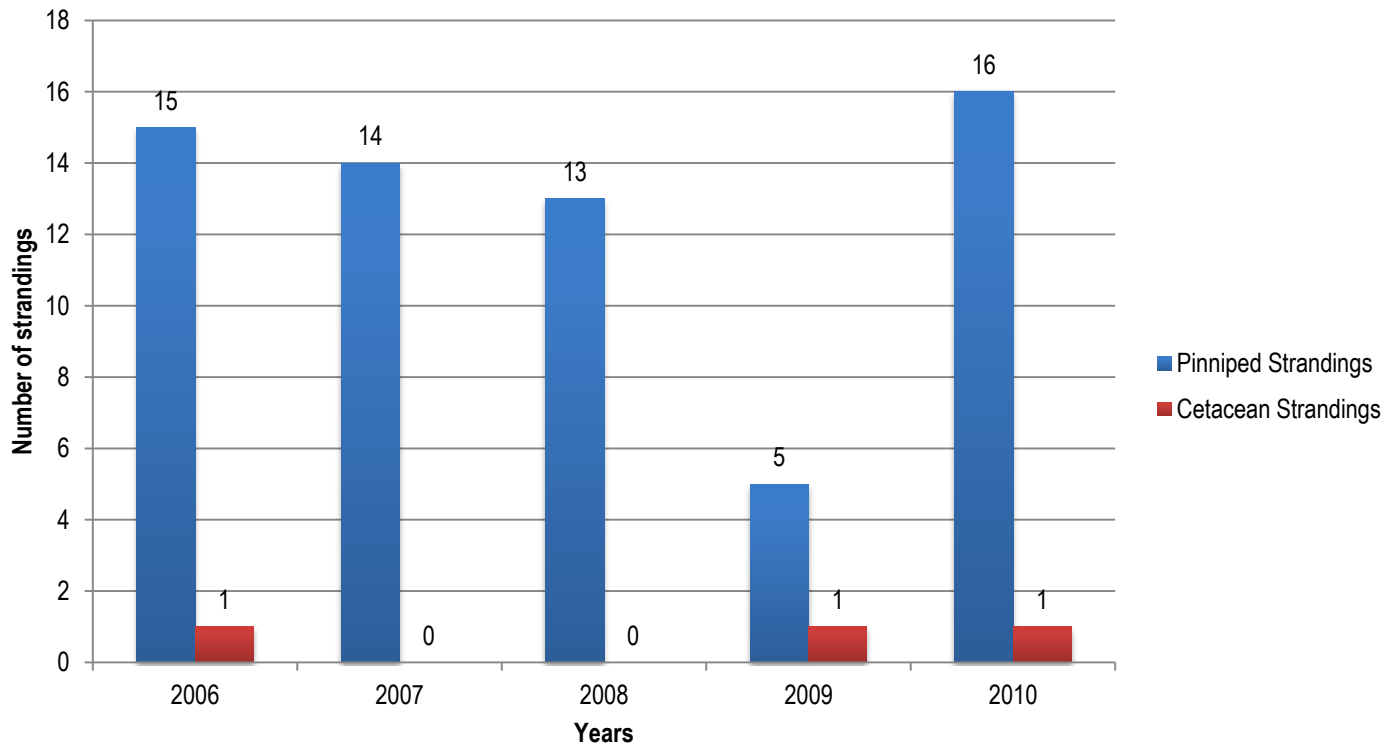


## Island County Marine Mammal Strandings by Region, 2006-2010





## Snohomish County Stranding Data, 2006-2010



## Snohomish County Marine Mammal Strandings by Region, 2006-2010

